

Mirror finished Cross-Section of various samples can be obtained.

Hitachi Ion Milling System
E-3500

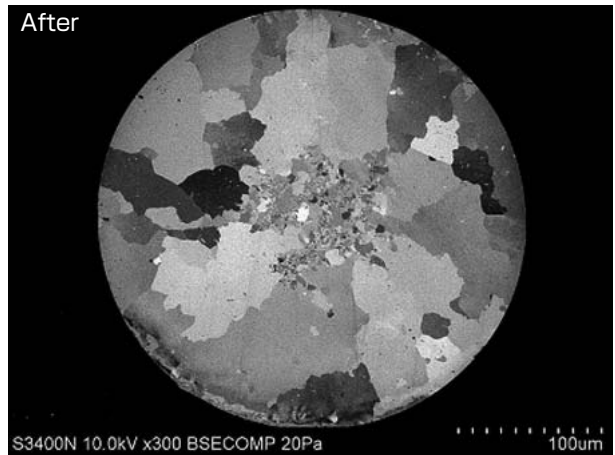
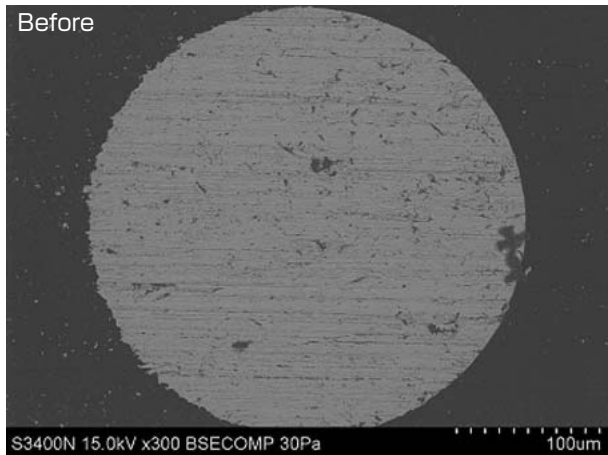


Feature

The ion beam which is parallel to the shielding plate ensure smooth Cross-Sectioning.

Small flaws and distortions caused by mechanical cutting and polishing can be reduced or removed.

Detachable specimen stage for ease of specimen setting.



Specifications

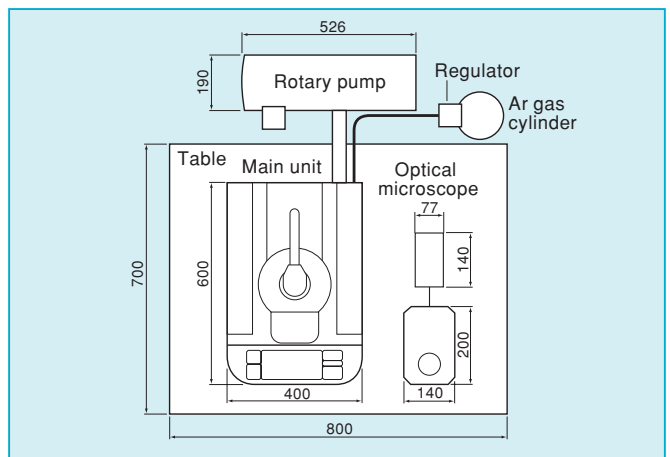
| Item | Description |
|------------------------------|---|
| Gas | Argon gas |
| Accelerating voltage | 0~6kV |
| Discharge current | 0~999µA |
| Ion Beam dia. | approx. 400µm (FMHW) |
| Max. milling rate*1 | 100µm/hr (Si) |
| Gas flow rate control system | Mass flow controller |
| Max. sample size | 20mm (W)×12mm (D)×5mm (H) |
| Stage traverse | X±10mm Y±5mm |
| Evacuation system | Turbo Molecular Pump (26L/s) Rotary Pump (135L/min at 50Hz (162L/min at 60Hz)) |
| Dimension | 400mm (W)×600mm (D)×535mm (H) |
| Weight | Main unit 45kg+Rotary pump 24kg |

* 1. Max.depth in milling with protruded by 100µm from mask edge.

Installation Requirement

| Item | Description |
|------------------|------------------------------------|
| Room Temperature | 15~30°C |
| Humidity | 70%RH or less |
| Power source | Single-phase AC100V (±10%) 1.25kVA |
| Grounding | 100Ω or better |

Typical Installation Layout (Unit:mm)



Items to be prepared by user

| Item | Description |
|----------------------------|---|
| Purity of Ar gas | 99.99% or better |
| Supply pressure of Ar gas | 0.03~0.05MPa |
| Pipe for connecting Ar gas | 1/8 inch SUS, Pressure Regulator*2 |
| Gas leak tester | 19% or more Oxygen density can be detected. |
| Recommended table size | 800×700mm, withstand load:50kg or more. |

*2. Pressure Regulator:Adjustable in a range of 0.03~0.05 MPa.

NOTICE: For proper operation, follow the instruction manual when using the instrument.

Specifications in this catalog are subject to change with/or without notice, as Hitachi High-Technologies Corporation continues to develop the latest technologies and products for our customers.

Hitachi High-Technologies Corporation

Tokyo, Japan

<http://www.hitachi-hitec.com/em/world/>

24-14 Nishi-Shimbashi 1-chome, Minato-ku, Tokyo, 105-8717, Japan

For further information, please contact your nearest sales representative.