

Hitachi Flat Milling System  
IM-3000

*Hitachi High-Technologies*

**Effective for removal of sample surface layer  
or the final finish of mechanical polish**

Hitachi Flat Milling System

**IM-3000**



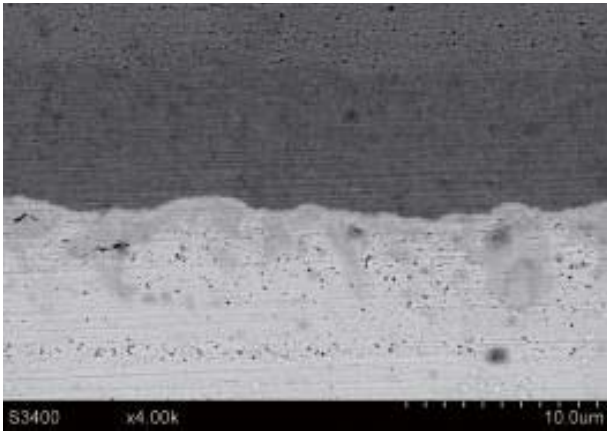
Process  
the range of  
 $\phi 5$  mm  
uniformly

Maximum  
specimen size  
 $\phi 50$ mm $\times$ H25mm

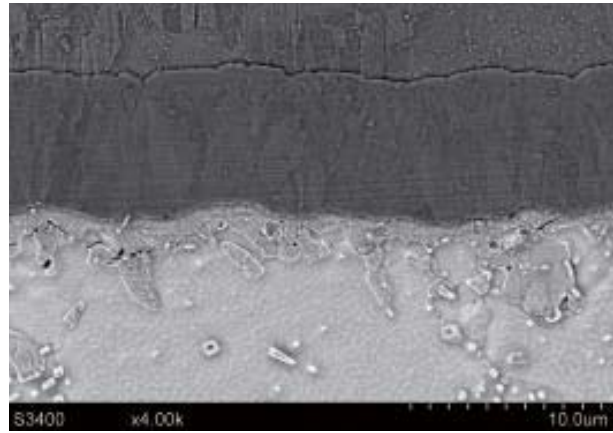
Available beam  
irradiation angle  
0 to 90°

Desktop  
and  
Compact Design

**HITACHI**



Before

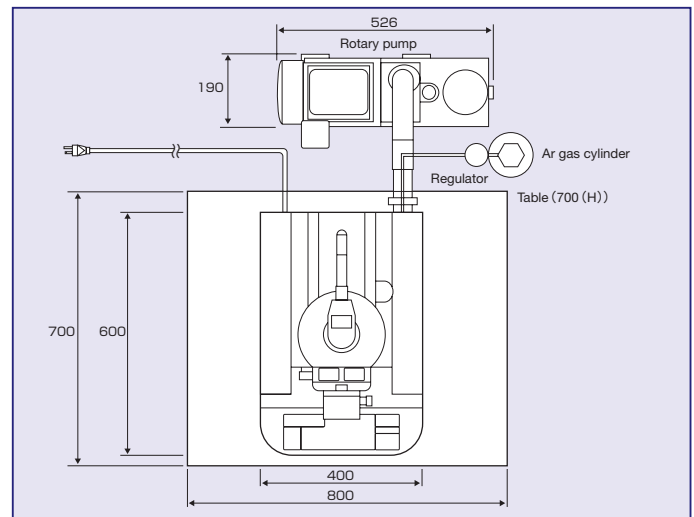


After

### Specifications

Item		Description
Ion gun	Gas	Argon gas
	Acceleration voltage	0 to 6kV
	Discharge current	0 to 1mA
	Maximum milling rate (Si)	Approximately 4μm/h (irradiation angle:60° Xrange:4mm)
stage	Tilt angle	0 to 90°
	X moving range	0 to 5mm
	Specimen rotational speed	0.017s <sup>-1</sup> , 0.17s <sup>-1</sup> , 0.425s <sup>-1</sup>
	Specimen reverse rotational angle	±45°, ±60°, ±90°
Maximum specimen size		φ 50mm×25H (mm)
Gas flow rate control system		Mass flow controller
Evacuation system		Turbo Molecular Pump (26L/s) Rotary Pump (135L/min at 50Hz,162L/min at 60Hz)
Dimension		400W×600D×515H (mm)
Weight		Main unit 47kg+Rotary pump 28kg

### Typical Installation Layout



### Installation Requirement

Item	Description
Room Temperature	15 to 30°C
Humidity	45 to 85%
Power supply	AC100V (±10%) 1.25kVA
maximum grounding resistance	100Ω

### Items to be prepared by user

Item	Description
Purity of Ar gas	99.99% or more
Supply pressure of Ar gas	0.03 to 0.05MPa
Pipe for connecting Ar gas	1/8inch SUS (5m max.), Pressure Regulator *1
Oxygen concentration meter	minimum oxygen concentration of 19% can be verified.
Recommended table size	800W×700D×700H (mm) , withstand load:50Kg or more

\*1.Pressure Regulator:Adjustable in a range of 0.03~0.05MPa

\*2.A lengthy argon gas connection tube (5m or greater) can take a correspondingly long time to purge the gas inside the tube when gas cylinders are changed.

NOTICE: For proper operation, follow the instruction manual when using the instrument.

Specifications in this catalog are subject to change with or without notice, as Hitachi High-Technologies Corporation continues to develop the latest technologies and products for our customers.

**Hitachi High-Technologies Corporation**

Tokyo, Japan

<http://www.hitachi-hitec.com/em/world>

24-14, Nishi-shimbashi,1-chome, Minato-ku Tokyo,105-8717, Japan

*For further information, please contact your nearest sales representative.*